

BeautyReport

NEWBEAUTY®
THE ULTIMATE BEAUTY PRODUCT SHOPPING RESOURCE

100+
BEST
BEAUTY
BUYS!

FREE!
BEAUTY
PRODUCTS
\$2,500 IN
GIVEAWAYS
Details Inside!



OUR EDITORS REVEAL
WHAT YOU NEED
NOW!

**PROVEN
BEAUTY
SOLUTIONS**

\$5.95 A SANDOW PUBLICATION 723
09281 03307 3
DISPLAY UNTIL MAY 30

SPECIAL ISSUE
— VOLUME 1 —

CATEGORY: **FACE** - FORMULATION: **DEVICE** - GOOD FOR: **DULL SKIN**

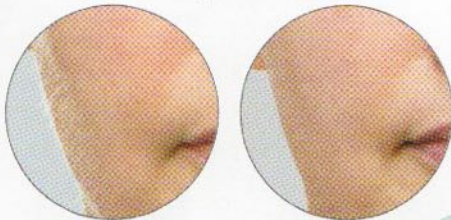
DERMAFLASH FACIAL EXFOLIATION DEVICE

CAMERA-READY SKIN IS OFFICIALLY
ATTAINABLE AT HOME IN A FLASH

01 What it is: An innovative device inspired by in-office dermaplaning, DERMAFLASH provides a superior level of exfoliation while removing peach fuzz, revealing radiant skin instantly.

02 We bet you didn't know: On August 30, 2016, 30,000 DERMAFLASH devices were sold in just 24 hours.

BEFORE
Peach fuzz, coupled with rough and uneven texture, make skin look aged and makeup application difficult.



AFTER
After using the DERMAFLASH, skin is instantly smoother, softer and fuzz-free for a radiant complexion.



"The skin you want is lying just below the skin you see."

—Founder and inventor,
Dara Levy



96%
of women reported skin felt softer and more supple after one use

Facial Exfoliation Device,
\$189, sephora.com

BASIC INFO

WHO IT'S GOOD FOR:
All skin types, tones and textures

WHAT IT'S DESIGNED TO DO: Remove the outermost layer of dead skin cells, debris and peach fuzz for an overall radiant complexion

SAFETY FEATURE:
Hygienic by design, a new "Edge" is required for each treatment

KEY FEATURES:
Proprietary stainless steel "Edge" and sonic vibration for maximum results and comfort

06 How to use it:
After cleansing skin with Prep Cleanser, insert a new "Edge" into the device. Hold the tool at a 45-degree angle and gently glide over cheeks, chin and forehead. Once complete, apply Soothe Moisturizer and you're good to glow!

03 What makes it unique: DERMAFLASH is the only device that uses sonic technology and an "Edge" to exfoliate and painlessly remove peach fuzz with zero irritation.

(CONTINUED)

| BRAND | PRODUCT | FORMULATION | GOOD FOR | WHERE TO FIND |
|--|--|-------------|-------------------|--|
|  Trilogy | Age-Proof CoQ10 Booster Oil | Oil | Anti-Aging | trilogyproducts.com |
|  MarulaOil | Rare Oil Treatment | Oil | Damaged Hair | raremarula.com |
|  Babo Botanicals | Lip Tint Conditioner SPF 15 | Lip Balm | Dry Lips | babobotanicals.com |
|  Tatcha | The Essence | Essence | Dull, Uneven Skin | tatcha.com |
|  Decleor | AROMESSENCE Neroli Hydrating Oil Serum | Oil-Serum | Dehydrated Skin | decleorusa.com |
|  Zoya | Naked Manicure Lavender Perfector | Nail Polish | Discolored Nails | nakedmanicure.com |
|  Éminence Organic Skin Care | Hibiscus Ultra Lift Eye Cream | Eye Cream | Puffy Eyes | eminenceorganics.com |
|  CBD For Life | Pure CBD Face Cream | Cream | Dull Skin | cbdforlife.us |
|  Dr. Hauschka Skin Care | Rose Day Cream | Cream | Dry Skin | dr.hauschka.com |
|  FarmHouse Fresh Organics | Blushing Agave Body Oil | Oil | Dry Skin | farmhousefreshgoods.com |

→ *high-tech breakthroughs*

| BRAND | PRODUCT | FORMULATION | GOOD FOR | WHERE TO FIND |
|---|---|----------------|--------------------|--|
|  GLO Science | Personal Teeth Whitening Device | Device | A Whiter Smile | gloscience.com |
|  PMD | Kiss | Device + Serum | Thin Lips | pmdbeauty.com |
|  Theorie | Saga Thermal Styling Brush | Device | Frizzy Hair | yourtheorie.com |
|  PMD | Personal Microderm Pro | Device | Rough Skin | pmdbeauty.com |
|  Michael Todd Beauty | SonicBLEND Antimicrobial Sonic Makeup Brush | Device | Makeup Application | michaeltoddbeauty.com |
|  Go Smile | Sonic Blue Teeth Whitening System & Smart Brush | Toothbrush | A Whiter Smile | gosmile.com |
|  Luma Brush | Luma Brush | Device | Curly Hair | lumabrush.com |
|  DERMAFLASH | Facial Exfoliation Device | Device | Dull Skin | sephora.com |
|  embrace® | Active Scar Defense | Device | Scars | embracescarterapy.com |